

INSTRUCTION MANUAL

DRY MATERIAL LEVEL PROBE WIRE PREPARATION

Unisource Assembly Corp. Part No. 9902-0004

DESCRIPTION:

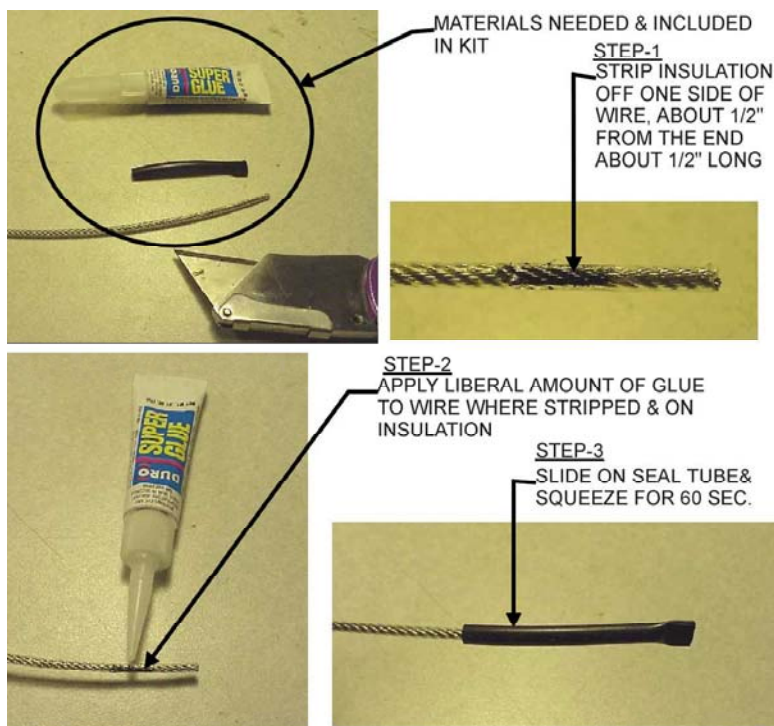
The Probe Wire must be cut to length and prepared for installation into the silo.

INSTALLATION:

The length should be from the top mount to no deeper than one-half of the cone at the bottom of the vessel.

The cut end should be covered with the Seal Tube provided with the Probe Wire Kit.

Insulating at the cut-off end of the wire:



WARNING: EYE IRRITANT. BONDS SKIN IN SECONDS. CONTAINS CYANOACRYLATE ESTER. Avoid contact with skin and eyes. In case of eye or mouth contact, hold eyelid or mouth open and flush with water. Call physician immediately. If fingers become bonded, apply Super Glue Adhesive Remover or acetone solvent (nail polish remover) to contact area and carefully roll skin apart with a pencil. Avoid prolonged breathing of vapors. Use with adequate ventilation. **KEEP OUT OF REACH OF CHILDREN.**

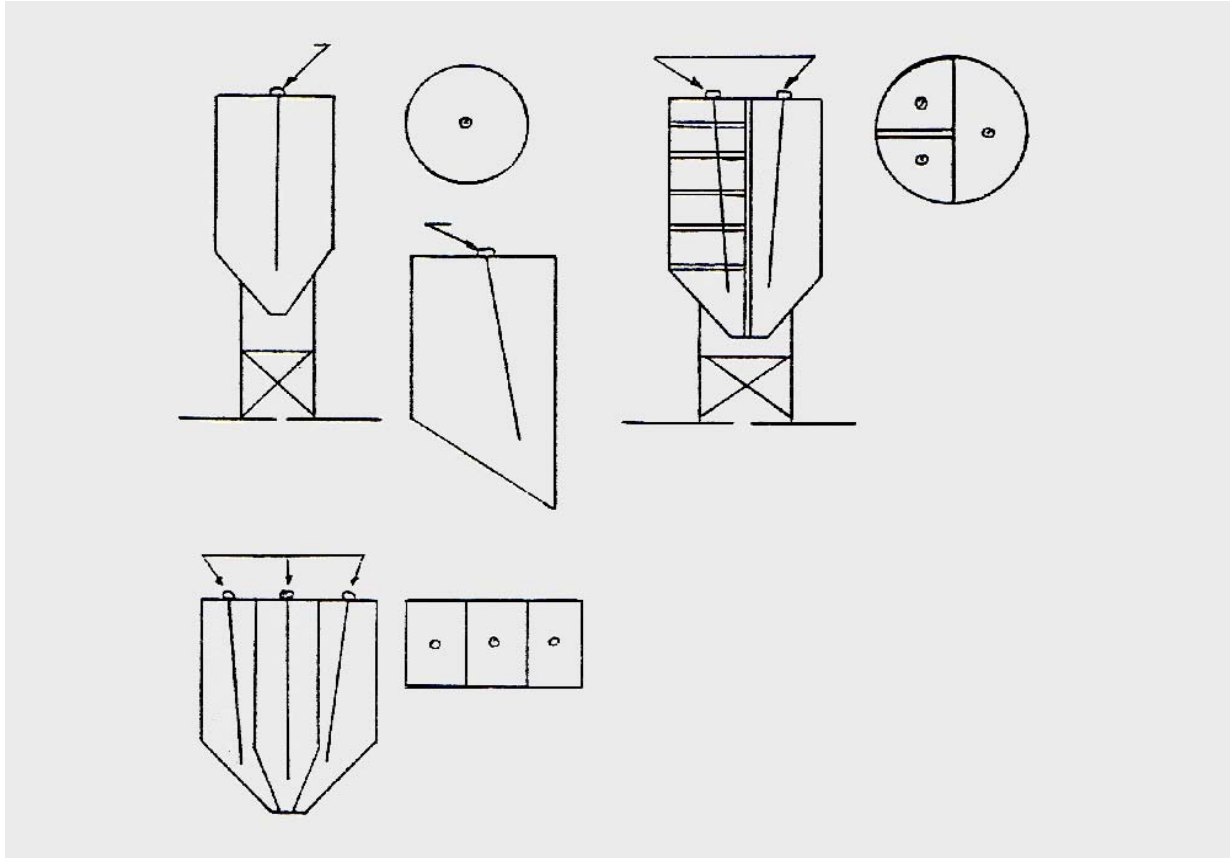
NOTE: The effective capacitance of this wire will change with the powdery coating of the material in the vessel. Therefore, it is difficult to set the low or zero reading with an unused wire. It is recommended that the wire be immersed into a bucket of the same material that is being stored in the vessel before installation.

APPLICATION NOTES AND INSTRUCTIONS

THE ENCLOSURE FOR THE SENSING UNIT MUST BE MOUNTED SO THAT THE PROBE WIRE DOES NOT COME IN CONTACT WITH THE SIDES OF THE VESSEL OR ANY INTERNAL BRACING. FOR BEST RESULTS, LOCATE THE ENCLOSURE AS NEAR TO THE CENTER OF THE SILO OR SILO COMPARTMENT AS POSSIBLE.

This weatherproof enclosure must make electrical contact with the storage vessel. Provide a watertight seal between the enclosure and the silo to assure that the Probe Wire remains dry.

Note that the probe wire will assume a dynamic position based on the material flow. See sketches below. This must be considered when deciding where to locate the Sensing Assembly on top of the silo.



1. Drill an 11/16" hole in the silo through which the probe wire is to be passed. This hole aligns with the hole in the enclosure. The enclosure must make good electrical contact with the silo. Pass the prepared end of the probe wire through both holes into the silo. The PVC elbow on the enclosure end of the probe wire should sit in the 11/16" hole and move freely.
2. Strip 1/2" of the Teflon insulation from the end of the Probe Wire inside the enclosure.
3. Connect the stripped end to the blue wire of the ELECTRONIC MODULE with the Twist-On Wire Connector (GB-2) supplied. If installing this probe wire with the older meter style indicating unit; attach a spade terminal to this stripped end and fasten the spade terminal under the proper screw on the terminal strip in the enclosure.